

**Product:** **FastGene® 1kb DNA Marker Plus**
**Cat. No. :** MWD1P

**Category:** *DNA Marker*

### Description:

A unique combination of a number of proprietary plasmids digested with appropriate restriction enzymes and PCR products to yield 13 fragments, suitable for use as molecular weight standards for agarose gel electrophoresis. The DNA includes fragments ranging from 100-10,000 base pairs. The 3K and 1K bands have increased intensity to serve as reference points. The approximate mass of DNA in each band is provided (0.5 ug a load) for approximating the mass of DNA in comparably intense samples of similar size.

### Source:

PCR products and dsDNA were digested with appropriate restriction enzymes. These were extracted with phenol and equilibrated to 10mM Tris-HCl (pH 8.0) and 10mM EDTA.

A detailed safety report can be downloaded at [www.nippongenetics.eu](http://www.nippongenetics.eu).

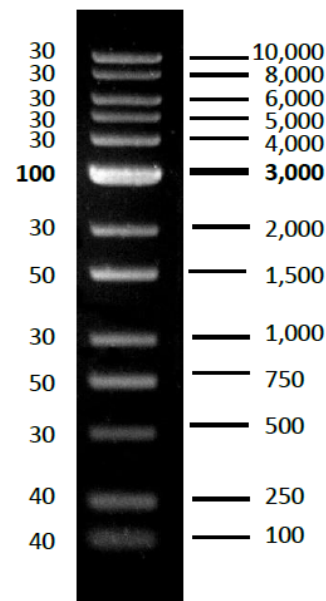
### Storage:

Store at 25°C for 6 months.  
Store at 4°C for 12 months.  
Store at -20°C for 24 months.

### Quick Notes

- Range: 100-10,000 bp
- Number of bands: 13
- Concentration: 100 µg/mL
- Recommended load: 5 µL/well
- Contains bromphenol blue & xylene cyanol FF as tracking dyes

DNA Mass  
(ng/5ul)



1 % TAE agarose gel

NIPPON GENETICS EUROPE GmbH, Commercial court Düren HRB 4672,  
Managing Directors: Dr. Jürgen Lünzer, Kazuo Yamazaki, Tomoyuki Araki