



SUPPORT

Please contact with local distributors or
(Service@bioptic.com.tw)

Troubleshooting Steps

- 1 HV check failed
 - 1-a. Repeat HV check 2-3 times.
 - 1-b. Soak cartridge tip in hot water and purge cartridge at least 15-30 mins with purge station simultaneously.

- 2 Calibration failed

Check HV purge, sample injection and separation current respectively.

 - Unstable current of sample injection:
Make sure Alignment Marker (20 bp & 1000 bp, C109100) was loaded $\geq 20 \mu\text{l}$ in 0.2 ml PCR tube and place at MA1/ M position.
 - Unstable current of HV purge or separation:
 - 2-a. Repeat unpacking procedure (2) and make sure the pin has been pressed all the way in (puncturing the internal gel barrier).
 - 2-b. Follow "Troubleshooting 1-b".

Website: www.bioptic.com.tw
Email: service@bioptic.com.tw
Tel: +886-2-2218-8726
Fax: +886-2-2218-8727

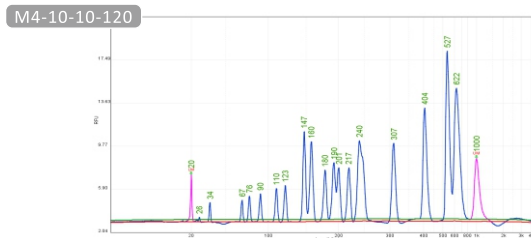
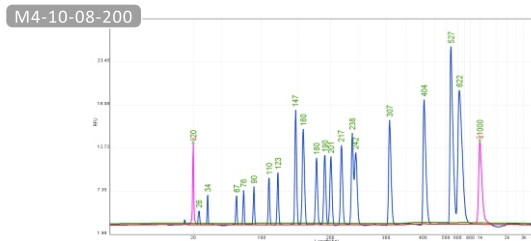
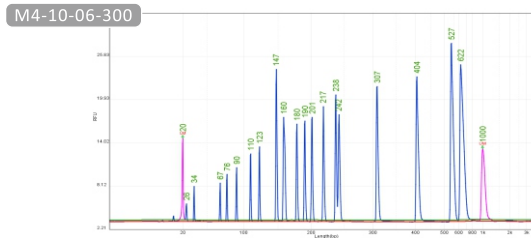


Packing list for 2 pcs/8 pcs cartridge kit

	High Resolution Cartridge Kit		
	2 pcs (C105202)	8 pcs (C105802)	Storage condition
High Resolution Cartridge (S1)	2 pcs	8 pcs	4°C~27°C
Alignment Marker (20bp & 1000bp, C109100)	100 μL *2	100 μL *8	-20°C
Separation Buffer	50 mL	250 mL	4°C~27°C
Dilution Buffer	15 mL	50 mL	
Mineral Oil	8 mL	25 mL	
Accessory Package			
Buffer Tray	2 pcs	8 pcs	
PCR Vial	8 Strip *1		
Dropper	2 pcs	8 pcs	

*Short-Term Storage (≤ 3 months): 4°C ~ 27°C ; Long-Term Storage: -20°C

Analyzed result of 15-622bp DNA Size Marker (C109200) by S1 cartridge



※ Download the cartridge user guide from QR code or [link](#).



Document No. F0030-B

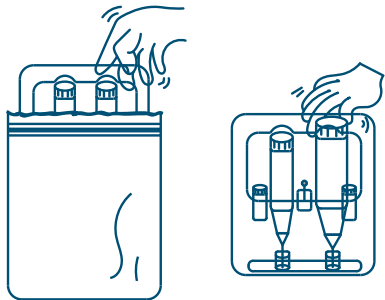
High Resolution Cartridge



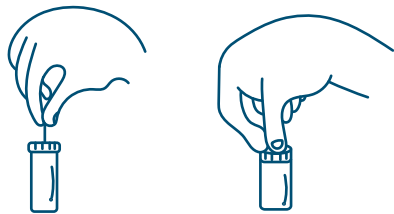
Bioptic
Inc.

Unpacking procedure

1 Open the cartridge shell and take out cartridge vertically.



2 Insert the pin into the small hole of cartridge cap and press it all the way in. Please repeat 2-3 times.

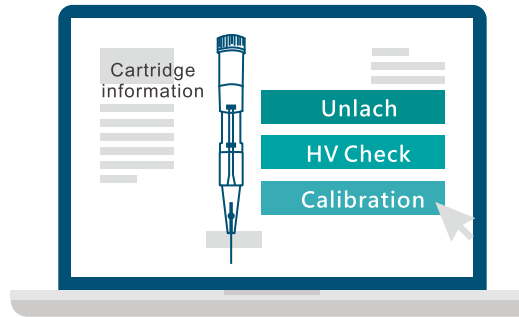


Recommendation: Repeat step 2 before use each time.

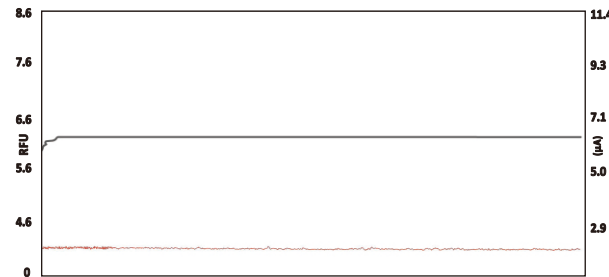
3 Remove the pin and clean cartridge cap and tip with tissue. Make sure the cartridge is always kept in vertical position.



4 Cartridge has to pass HV check and Calibration before use.

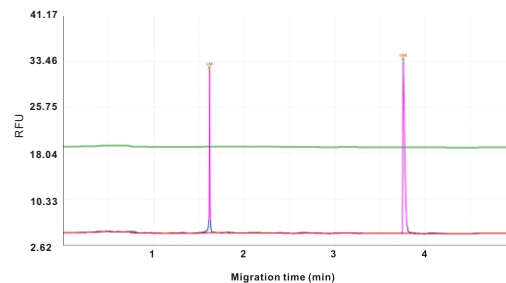


● HV Check: The current (gray line should be flat and >2 μ A)



*If the HV Check failed, please refer to troubleshooting (1).

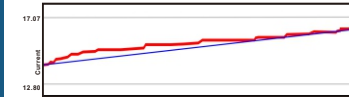
● Calibration: Place alignment marker 20 bp & 1000 bp (C109100) at MA1/M position.



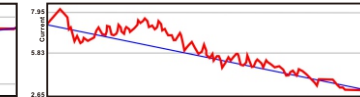
*If the Calibration failed, please refer to troubleshooting (2).

Once the the calibration step is successful, check the HV purge, sample injection and separation current. If the current is unstable, please refer to troubleshooting **2**

HV purge

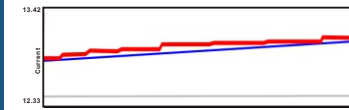


Stable

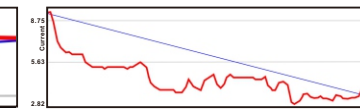


Unstable

Sample Injection

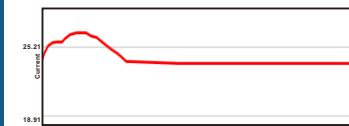


Stable

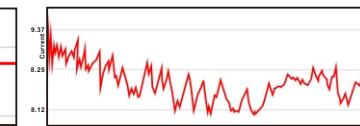


Unstable

Separation



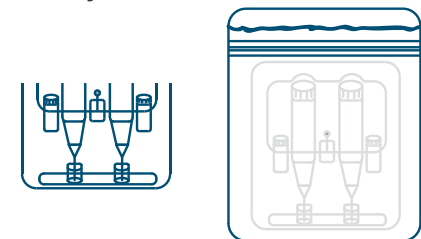
Stable



Unstable

Packing Cartridges

Please inert cartridge back to cartridge shell and put cartridge shell into moisturizing bag after analysis.



*Please ensure cartridge tip be inserted into protection gel