



Troubleshooting Steps

- 1 Current of HV Purge is unstable or $< 2 \mu\text{A}$
 - 1-a. Repeat HV Purge 2-3 times.
 - 1-b. Soak cartridge tip in hot water and purge cartridge at least 15-30 mins with purge station simultaneously.

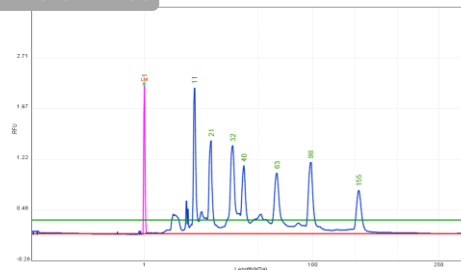
Packing list for 1pc/ 2 pcs cartridge kit

	Protein Cartridge Kit		
	1pc (C105121)	2 pcs (C105221)	Storage condition
Protein Cartridge (P2)	1 pc	2 pcs	2°C~8°C
5x Separation Buffer (SDS), (C104501-5X)	50 mL	50 mL	15°C~27°C
1x Dilution Buffer (SDS), (C104505)	15 mL	15 mL	
Accessory Package			
Buffer Tray	2 pcs	2 pcs	
PCR Vial	8 Strip*1	8 Strip*1	
Dropper	2 pcs	2 pcs	

▲ Warm to room temperature for 30 min before cartridge use.

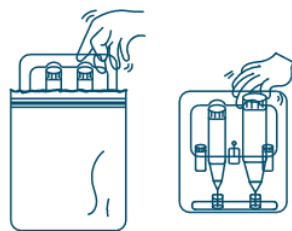
Analyzed result of 15-622 bp DNA Size Marker (C109200) by S2 cartridge

P4-10-04-1200



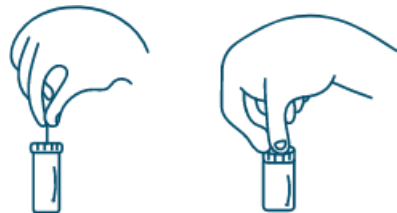
Unpacking procedure

- 1 Open the cartridge shell and take out cartridge vertically.



Warm to room temperature for 30 min before cartridge use.

- 2 Insert the pin into the small hole of cartridge cap and press it all the way in. Please repeat 2-3 times.



Recommendation: Repeat step 2 before use each time.

- 3 Remove the pin and clean cartridge cap and tip with tissue. Make sure the cartridge is always kept in vertical position.

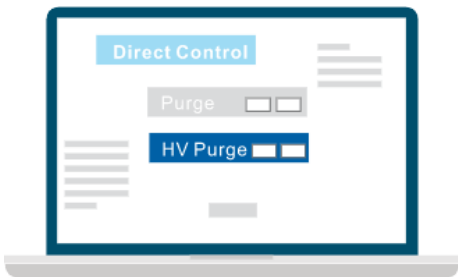


- 4 Prepare Separation buffer before HV purge and analysis.



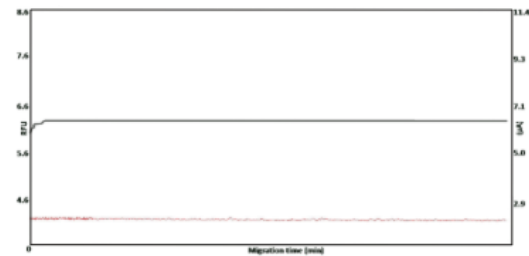
Dilute 5X Separation buffer (C104501-5X) to 1x by d₂H₂O and fill it into 4 wells (S, P, W and C) of buffer tray

- 5 Cartridge has to do HV Purge before Use.



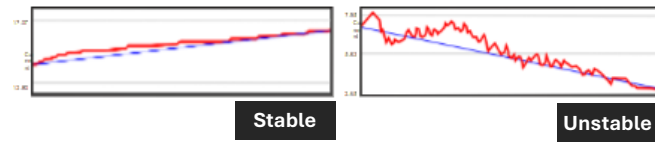
- Click “Direct Control” from control panel
- Click “Go” of HV Purge. The condition is 4 kv, 120s.

HV Purge : The current (gray line should be flat and >2 μA



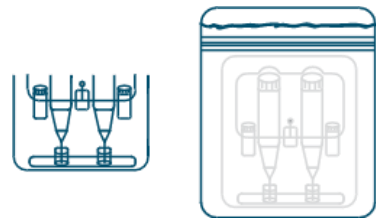
If the HV Purge current is unstable or <2 μA, please refer to troubleshooting (1)

HV Purge



Packing Cartridges

Please insert cartridge back to cartridge shell and put cartridge shell into moisturizing bag after analysis.



*Please ensure cartridge tip be inserted into protection gel.