

User Guide

Standard (S2) Cartridge Kit (C105101/C105201/C105801)

A. Specifications

Specification	Description
DNA Sizing Range	20-5,000 bp
L.O.D	0.1 ng/μL
Resolution*	4-10 bp
Sample Number	200 runs
Shelf Life	6 months

* Best resolution is determined by the 15-622 DNA Size Marker (C109200).

B. Kit Components and Storage Conditions

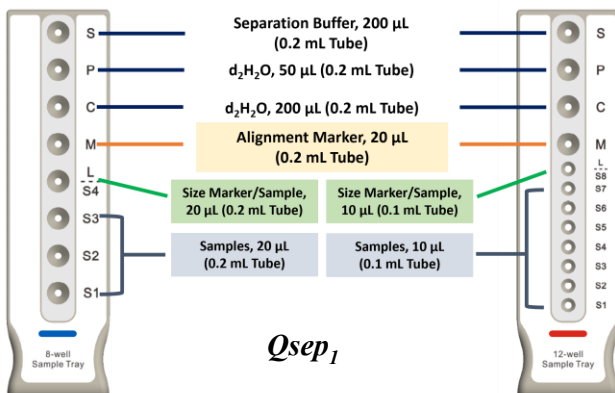
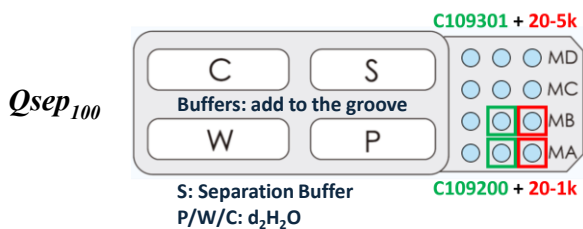
Item	Storage Condition
Standard Cartridge (C105101/C105201/C105801)	4-30°C (Do Not Freeze)
20-1,000 bp Alignment Marker (C109100-100A, 100 μL)	Short-Term (≤ 3 months): 4-30°C Long-Term (> 3 months): -20°C
Separation Buffer (C104406, 50 mL/C104403, 250 mL)	4-30°C
Dilution Buffer (C104405, 15 mL/C104402, 50 mL)	4-30°C
Mineral Oil (C104404, 8 mL/C104401, 25 mL)	4-30°C

• Please always store cartridges in a light-proof bag, and then store in the cartridge box after analysis.

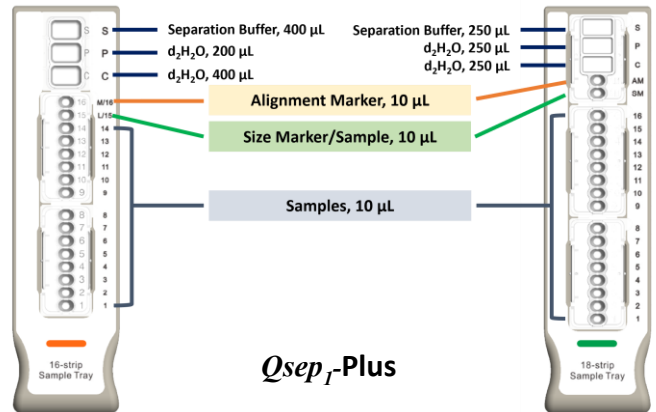
C. Cartridge Unpacking Preparation

The new cartridge must undergo HV check and calibration. Please follow the instructions provided in the unpacking guide and calibrate using C109100 Alignment Marker.

D. Buffer, Marker, and Sample Preparation



• Ensure the buffer tray is pushed to the end until the color bar aligns with the edge of the holder.



1. Compatible Sample Tubes

	Name	Cat. No.	Volume	Image
<i>Qsep₁₀₀</i> / 8-well Sample Tray	Micro Vial	C104250	≥ 2 μL	
	0.1 mL PCR Tube	-	≥ 10 μL	
	0.2 mL PCR Tube	-	≥ 20 μL	
12-well Sample Tray	0.1 mL Strip Tube	C104252	≥ 10 μL	
16-strip Sample Tray	16-strip Sample Tube	C104254	≥ 10 μL	
18-strip Sample Tray	18-strip Sample Tube	C104257	≥ 10 μL	

2. Markers Required for Different Size Ranges

- For Sample Size Range from 20 bp to 1,000 bp:
 - 20 bp-1,000 bp Alignment Marker (C109100)
 - 15-622 bp Size Marker (C109200)
- For Sample Size Range from 20 bp to 5,000 bp:
 - 20 bp-5,000 bp Alignment Marker (C109102)
 - 50 bp-3,000 bp Size Marker (C109301)

3. Recommended Sample Concentration

Fragmented sample: 0.1-10 ng/μL

- If the fragment sample concentration exceeds 10 ng/μL, dilute the sample 10X using 1X dilution buffer.

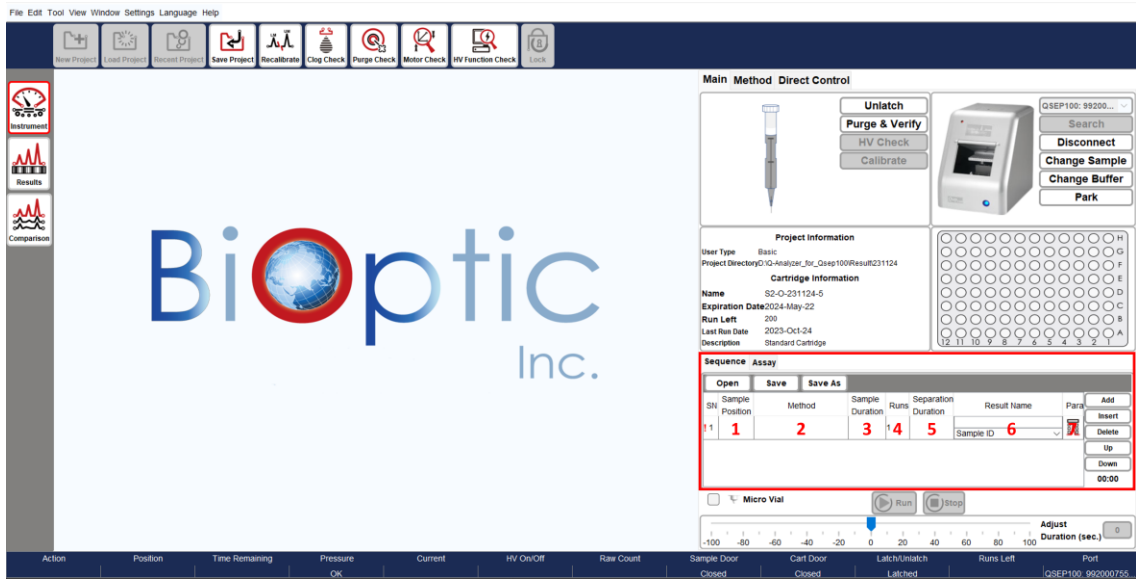
Smear sample: 2-50 ng/μL

- If the fragment sample concentration exceeds 50 ng/μL, dilute the sample 10X using 0.1X dilution buffer.
- If the sample is eluted in water, add dilution buffer to achieve a sample concentration of either 0.2X or 0.1X dilution buffer condition.

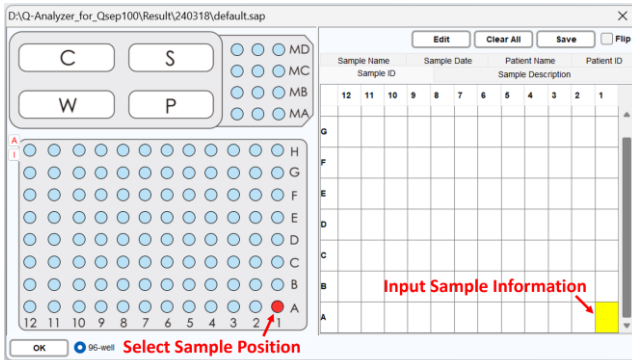
User Guide

Standard (S2) Cartridge Kit (C105101/C105201/C105801)

E. Software Operation Guide

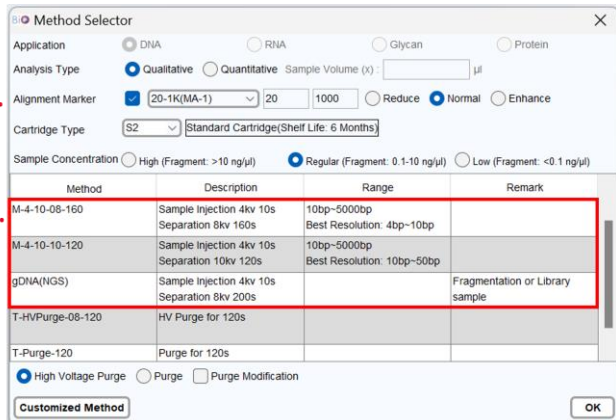


1. Sample Position: Place the sample and select the corresponding position. Input sample information if necessary.



- For *Qsep_i* and *Qsep_i-Plus* users, select the appropriate markers and proceed to step 2(b).

2. Method: Select (a) Alignment Marker and (b) Analytic Method in the Method Selector.



- Adjust injection conditions based on sample concentration.

Sample Concentration	High (2kV, 10s)	Regular (4kV, 10s)	Low (8kV, 10s)
Fragmented DNA	> 10 ng/μL	0.1-10 ng/μL	0.01-0.1 ng/μL
Smear DNA	> 50 ng/μL	2-50 ng/μL	0.5-2 ng/μL

3. Sample Duration: Adjust the sample injection time to increase/decrease injection amount.

- Modify injection conditions based on sample concentration.

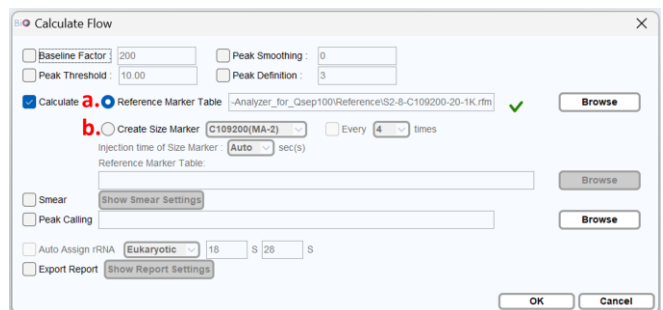
4. Runs: Set the repetition time.

5. Separation Duration: Adjust the duration to extend/reduce the separation time.

(Optional)

6. Result Name: Input the result name for the result file.

7. Para: Choose between (a) Reference Marker Table and (b) Create Size Marker for calculation.



- When using "Create Size Marker" function, select the appropriate size marker you use. For example, "20-1k" is paired with C109200, "20-5k" is paired with C109301.

8. Click "Run" to start the sequence analysis.

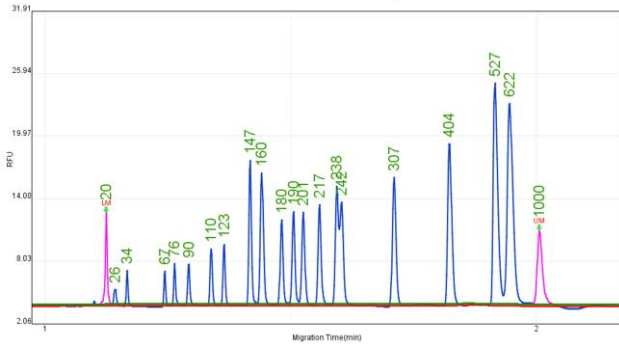
User Guide

Standard (S2) Cartridge Kit (C105101/C105201/C105801)

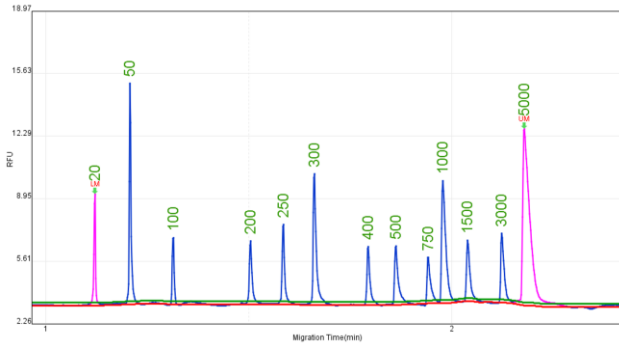
F. Result & Application

Alignment Marker & Size Marker Result

20-1K & C109200 15-622 bp Size Marker

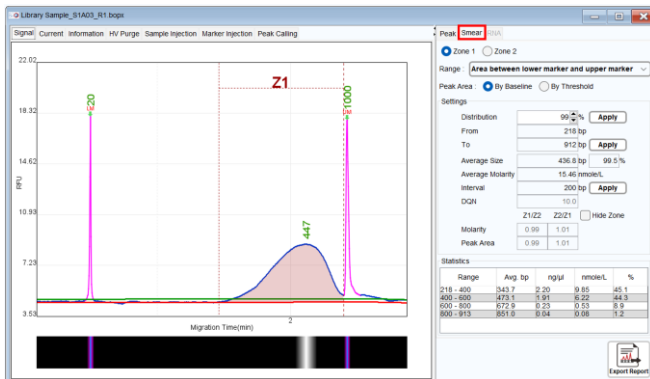


20-5K & C109301 50-3000 bp Size Marker



Fragmented & Library Sample Validation

Use the smear function to obtain average size, molarity, and size distribution of fragmented DNA or library DNA samples.



Range	Avg. bp	ng/μl	nMole / L	Percent
218 - 400	343.7	2.20	9.85	45.1
400 - 600	473.1	1.91	6.22	44.3
600 - 800	672.9	0.23	0.53	8.9
800 - 913	851.0	0.04	0.08	1.2

G. Troubleshooting

Before attempting any troubleshooting, ensure that the system is functioning properly and that all operations are following the instructions.

If encountering unstable current during sample injection or separation steps, which may be caused by unknown substances in PCR reagent buffer or other kit buffers, consider the following solutions:

1. Dilute the sample using dilution buffer.
2. Centrifuge the sample for a period to allow residues to accumulate at the bottom of the tube.
3. Insert a "T-purge-120" method between several sample runs. For example, insert one run of "T-Purge-120" every 5-10 sample runs.

Sequence		Assay									
Open	Save	Save As									
SN	Sample Position	Method	Sample Duration	Runs	Separation Duration	Result Name	Para				
1	A-01.A...	M-4-10-08-160	10	1	160	Test 1 Sample ID					
2		T-Purge-120	0	1	0	Sample ID					
3	B-01.B...	M-4-10-08-160	10	1	160	Test 2 Sample ID					

H. Cartridge Disposal

Please wear gloves before discarding the cartridge.

Gel reservoir



1. Bend the cartridge tip.
2. Open the cap on the gel reservoir and remove the inner cap.
3. Pour the gel into the chemical waste container.
4. Dispose of the cartridge in the trash bin.

Cartridge tip

Contact Information:

Company Name: BiOptic Inc.

Address: 5F., No.108, Minquan Rd., Xindian District, New Taipei City 23141, Taiwan

Tel: +886-2-2218-8726, Fax: +886-2-2218-8727, E-mail: service@bioptic.com.tw